

**CORN EXCHANGE**  
IPSWICH

# TECHNICAL INFORMATION

# UPDATED JANUARY 2024

## Address

Ipswich Corn Exchange, King Street, Ipswich, IP1 1DH

What3Words slang.melon.loaf

### Parking After Unloading

Ipswich Regent, Woodbridge Road, IP4 2EA

What3Words divide.rush.data

## Capacity

Full Standing 850 (+176 seated balcony)

Full Seated 740 (including balcony)

Balcony 176

*Total Capacity Dependant on Layout Required – Multiple Options Available*

## Contact

### Venues Management

Richie Ross

[richie.ross@ipswich.gov.uk](mailto:richie.ross@ipswich.gov.uk)

### Programming & Ticketing

Peter Ling

[peter.ling@ipswich.gov.uk](mailto:peter.ling@ipswich.gov.uk)

### Technical Manager

Abbie Farnworth

[abbie.farnworth@ipswich.gov.uk](mailto:abbie.farnworth@ipswich.gov.uk)

07385936628

### Stage Manager / Technician

Tom Dransfield

[tom.dransfield@ipswich.gov.uk](mailto:tom.dransfield@ipswich.gov.uk)

Steve Mann

[steve.mann@ipswich.gov.uk](mailto:steve.mann@ipswich.gov.uk)

Ben Ager

[ben.ager@ipswich.gov.uk](mailto:ben.ager@ipswich.gov.uk)

Joanna Sebastian-Green

[jo.sebastiangreen@ipswich.gov.uk](mailto:jo.sebastiangreen@ipswich.gov.uk)

Laurence Scarlett

[laurence.scarlett@ipswich.gov.uk](mailto:laurence.scarlett@ipswich.gov.uk)

Keith Zukowski

[keith.zukowski@ipswich.gov.uk](mailto:keith.zukowski@ipswich.gov.uk)

# Useful Measurements

## Stage Heights

To Hall Roof (centre)	13.0m / 42'7"
To Hall Roof (edge)	7.6m / 24'11"
Arch	9.1m / 29'10"
To Stage Roof (centre)	10.7m / 35'1"
To Stage Roof (edge)	7.8m / 25'7"

## Stage Depths

Back Wall → Arch	2.8m / 9'2"
Back Wall → Rear Lift	5.0m / 16'5"
Back Wall → Front Lift	6.5m / 21'4"
Back Wall → Stage Front	8.0m / 26'3"

## Stage Widths

Overall	17.7m/58'1"
Overall (Masked)	10.8m/35'5"
Arch	12.2m/40'0"

## Auditorium

Stage Front → Rear Wall	27.8m / 91'2"
Stage Front → Balcony Front	19.2m / 63'0"

## Over Stage Truss

Max Height	5.0m / 16'5"
Width	15.4m / 50'6"
Depth	3.7m / 12'2"

## Over Auditorium Truss

Stage Front → Front Truss	4.6m / 15'1"
Stage Front → Rear Truss	9.5m / 31'2"
Max Height	7.6m / 24'11"
Width	4.6m / 15'1"
Depth	4.9m / 16'1"

## Mixer Position

No Fixed Position



# Access

## Parking & Loading

Loading is limited to a loading bay located on King Street. We are rarely able to suspend parking restrictions so all parking once unloaded must be at the Ipswich Regent's Production Vehicle Area. There is also a public car park nearby (Cromwell Square) which has free parking available after 6pm

- The Ipswich Regent has a secure production vehicle area which can accommodate up to 4 x 45' Trucks & 2 x Buses.
- You will be provided with an access code by the Venue Stage Manager whilst advancing the show.
- The PVA can be accessed via the gates located on Woodbridge Road, IP4 2EA at the rear of the venue.
- Early arrival & prolonged stays can sometimes be accommodated dependant on other requirements of the PVA. Please confirm with the Stage Manager.

Shore power is available comprising of 4 x 16A & 1 x 32A Single Phase

## Load In

The load in is through the single green door located on King Street. This leads to a lobby with a lift up to the first floor Grand Hall. The stage is equipped with 10 hydraulic lift sections which will be dropped floor level ready for loading. These are rated to **300kg** per section.

On non-market days and load outs we are able to access a second lift located in the accessible entrance. This is slightly larger and located at the rear of the Grand Hall which can speed up load outs.

### Stage Door Goods Lift

Length: 1.25m / 4'3"

Width: 1.0m / 3'5"

Height: 2.1m / 7'0"

Door: 0.75m x 1.95m / 2'7" x 6'6"

Stage Door: 0.8m x 2.0m / 2'9" x 6'9"

### Customer Service Centre Lift

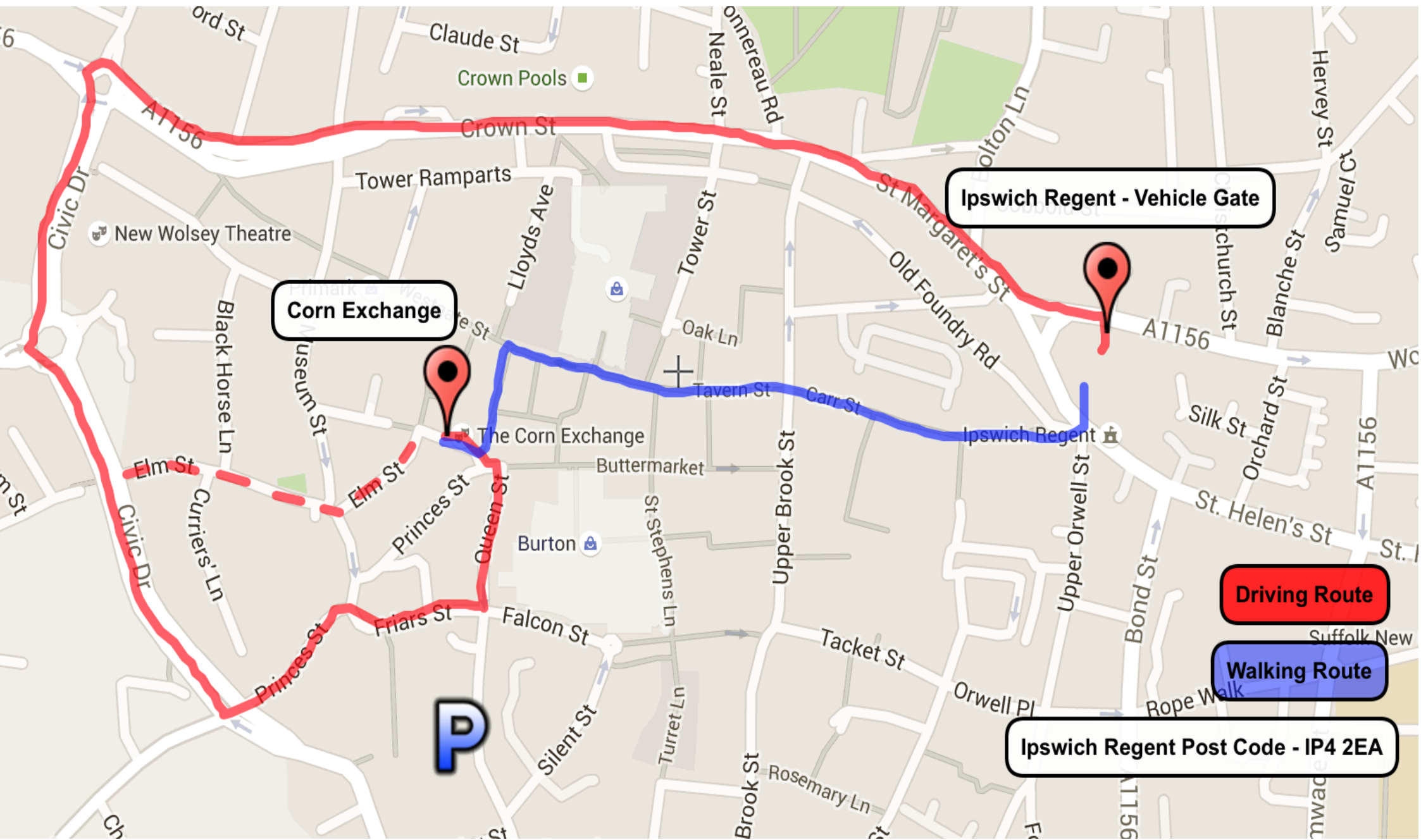
Length: 2.15m / 7'2"

Width: 0.9m / 3'0"

Height: 2.05m / 6'9"

Door: 0.9m x 2.0m / 3'0" x 6'7"

## Ipswich Corn Exchange to Ipswich Regent Theatre Route



## **Power**

### **Stage Left (Sound Power)**

1 x 63a 1ø

1 x 32a 1ø

1 x 16a 1ø

8 x 13a

### **Stage Right**

3x 63a 3ø

8 x 13a

## **Spot Position**

2 x 16A 1ø

## **Rear Hall**

1 x 63a 1ø

## **Dimmable – 102 Ways**

**Please Note We Only Have 48 x Dimmers Available, Some Ways Are Paired**

14 x 15A – Auditorium Truss

5 x 15A – Auditorium Booms

12 x 15A – Balcony Front & Booms

18 x 15A – DS Truss

12 x 15A – Truss Sides

18 x 15A – US Truss

6 x 15A – Arch (Paired Either Side)

5 x 15A – Arch (SR)

12 x 15A – Stage Rear Wall SR

6 x 15A – LX Bar (Behind Arch)

## **Flying**

Over Stage Truss Grid **SWL 750KG**

Over Auditorium Truss Grid **SWL 750KG**

3 x **80kg SWL** Hemp Bars (Behind Arch)

1 x **80kg SWL** Hemp LX Bar (Behind Arch)

Fixed Rear Black Tabs (Behind Arch)

Fixed Rear Red Tabs (Behind Arch)

## **Lighting**

Due to the nature and use of venue we have a semi-fixed rig consisting of the following.

8 x 6ch 2kw Pulsar Rack Pak dimmers  
36 x Par 64 Par Can  
30 x CCT "Starlette" 1kW Fresnel  
8 x CCT "Silhouette 30" 1kW 19 – 40 Profile  
8 x Strand Pat 223 1kW Fresnel  
2 x Followspot

ChamSys Magic Q MQ70 Compact Console Lighting Desk

## **Sound (per side)**

6 x WPS elements ground stacked  
1 x SXC118 Sub  
2 x SX218 Dual 18inch Subs

## **On Stage**

4 x Martin Audio DD6 Front Fills  
4 x Martin Audio LE100 12 inch Monitor Wedges

Powered by Martin Audio IKON Amps on a 1:1 ratio (1 Amp Channel Per Line Array Element) for the best possible sound dispersion.

## **Desk**

Allen and Heath SQ6  
Allen and Heath AR2412 Stage Box

## **Tie Lines**

16amp Power  
4 Cat 6  
8 Analogue XLR

## **Other Sound Equipment**

4 x Turbosound TMS-4  
6 x RCF Speaker Cabs (Delays / Small Events)  
5 x Foldback Speakers (various makes)  
1 x Soundcraft Delta 24 Channel Desk  
1 x Soundcraft Spirit 16 Channel Desk  
1 x 50m Multicore 24 + 8 1  
1 x Yamaha P3200 Amp  
2 x Yamaha P1600 Amps  
1 x Rane Crossover AC23B  
2 x QSC PLX 1104 Amps  
1 x C Audio RA500 Amp  
1 x H/H V500 Amp  
1 x Amcron D75 Amp  
1 x RCF DX4008 Processor  
1 x Yamaha SPX 90  
1 x Yamaha Graphic Q2031A  
1 x dbx Graphic  
1 x Sony CD/DVD Player DVP – NS76H  
1 x Sony CD Player CDP – XE370  
1 x 5 Disc CD Player SL – PD887  
1 x Technics Stereo Cassette Deck RS TR373  
1 x Technics CD Player SL – PG5  
1 x Audio Tech DI Box  
8 x Studiospares DI boxes

## **Microphones**

2 x Audio Technica ATM11R  
7 x Shure SM58  
5 x Shure SM57  
2 x Calrec Condenser Ck3  
3 x AKG 320B  
8 x AKG D190E  
1 x AKG D190ES

## **Conference System**

2 x RCF DMU 6100 Central Units  
50 x RCF DMU 6410 Consoles / Mics

## **Access Equipment**

1 x Snorkel UL40 Mast Lift



## **Stage Equipment**

4 x 8x4 Lite Deck – Various Heights Available Upon Request

4 x 8x4 Steal Deck – Various Heights Available Upon Request

6 Level Tiered Staging Available Across Rear Of Stage For Choirs/Orchestras

Wing Masking

Rear Black Tab Track

## **Piano & Organ**

1950's Full Size Ebony Steinway D Type Made in Germany – Available On Request

Tuner Can Be Provided at a cost On Request

1876 Electro Pneumatic Organ with 35 stops. 3 x manual with Bass pedals built by Thomas Lewis. Originally from Holy Trinity Church, Paddington, London. Installed in Ipswich by Bishop & Son in 1975.

## **Stage Crew**

Experienced In-House Local Crew & Technicians Available On Request.

## **Rooms**

5 Dressing Rooms are available:

Stage Level -1 has 2 Dressing Rooms; 1 single and 1 for 5 to 10 people. Both have showers and sinks.

Stage Level -2 is identical to Stage Level -1.

Stage Level +1 has 1 large Dressing Room/Green Room. Suitable for large groups. This room does not have a sink or shower.

Other rooms throughout building may be available on request.

## **WI-FI**

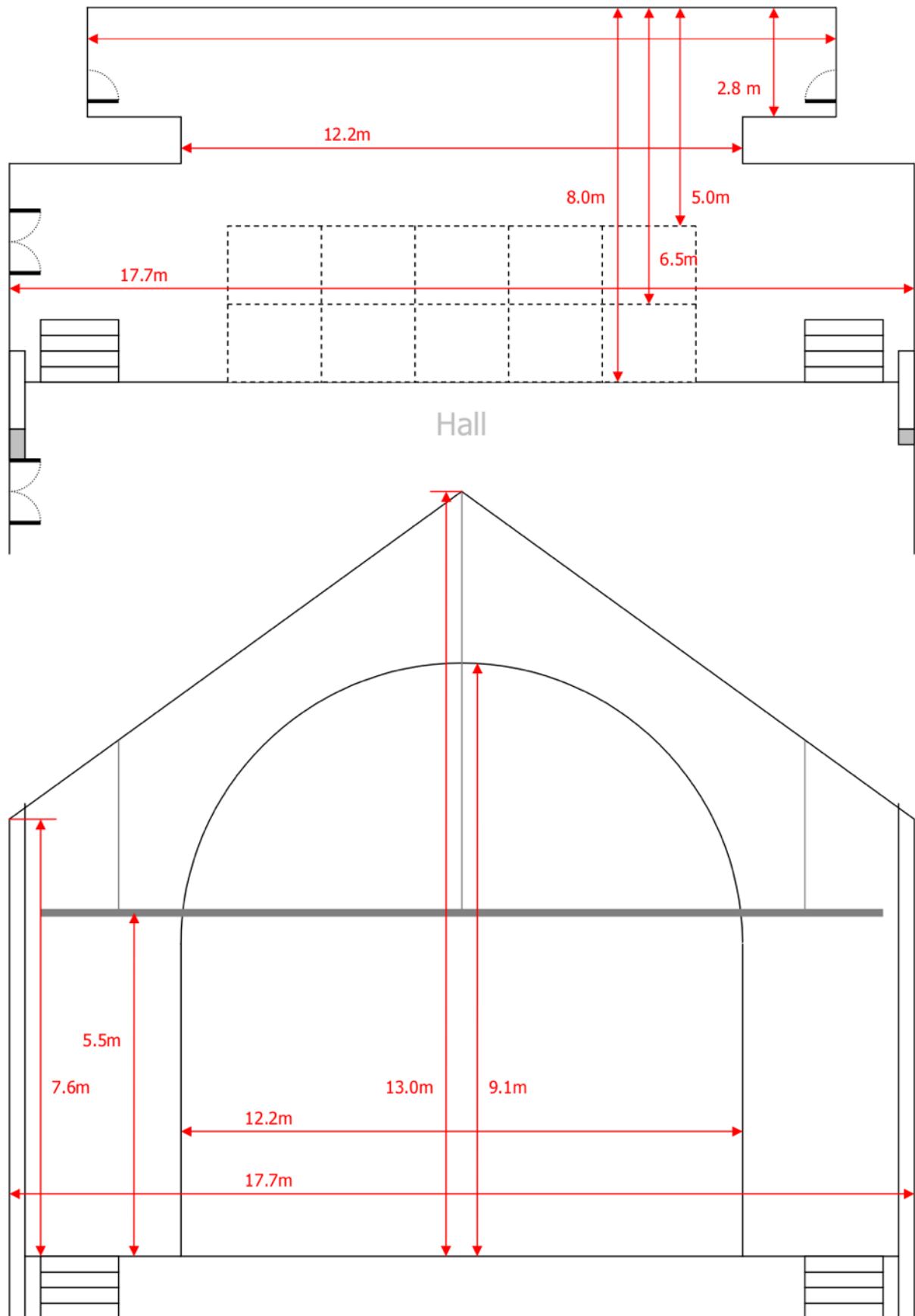
Available Throughout Venue ***public\_wifi – TownHall***

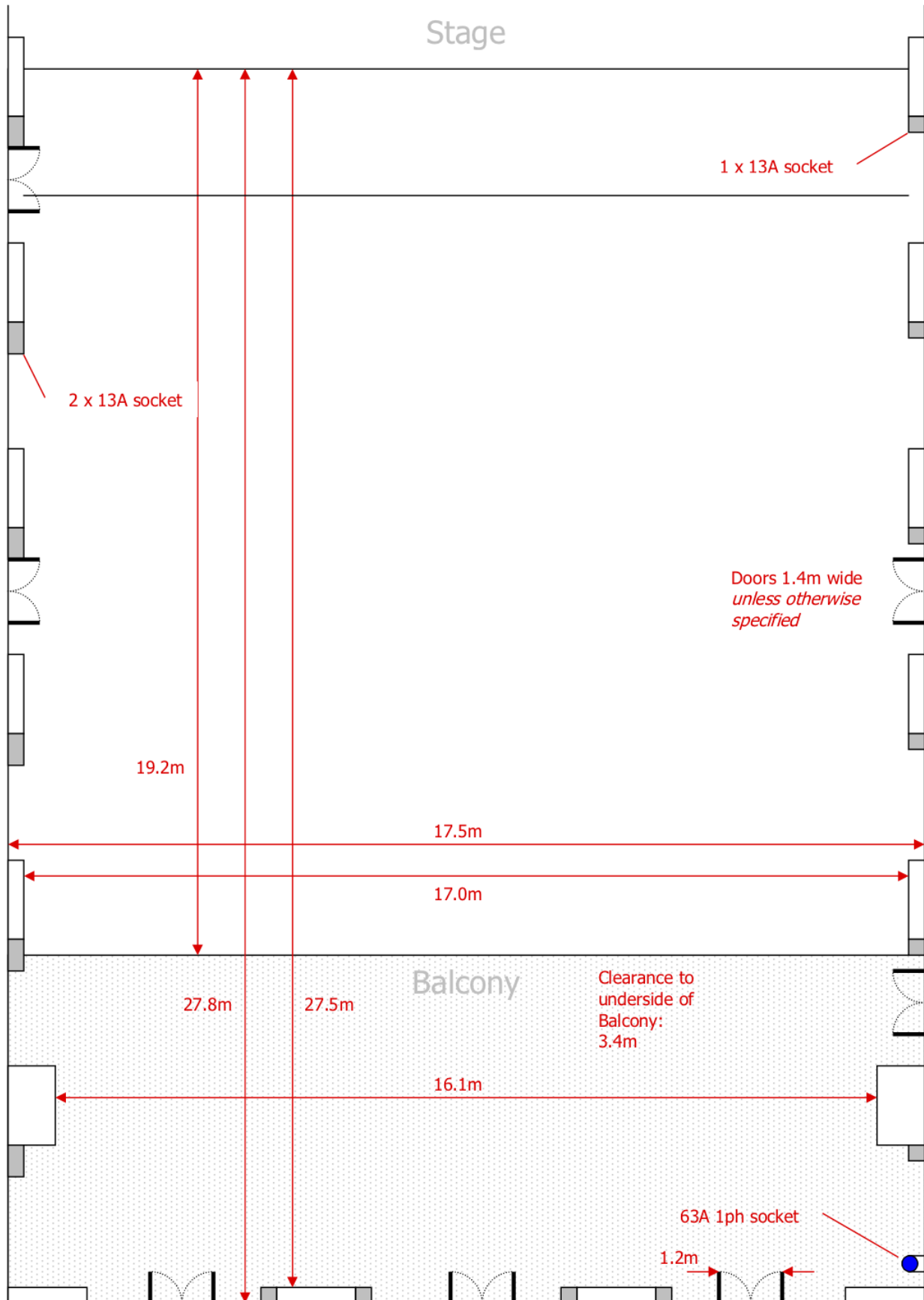
## **Towels**

Venue Able To Provide Up To 100 On Request.

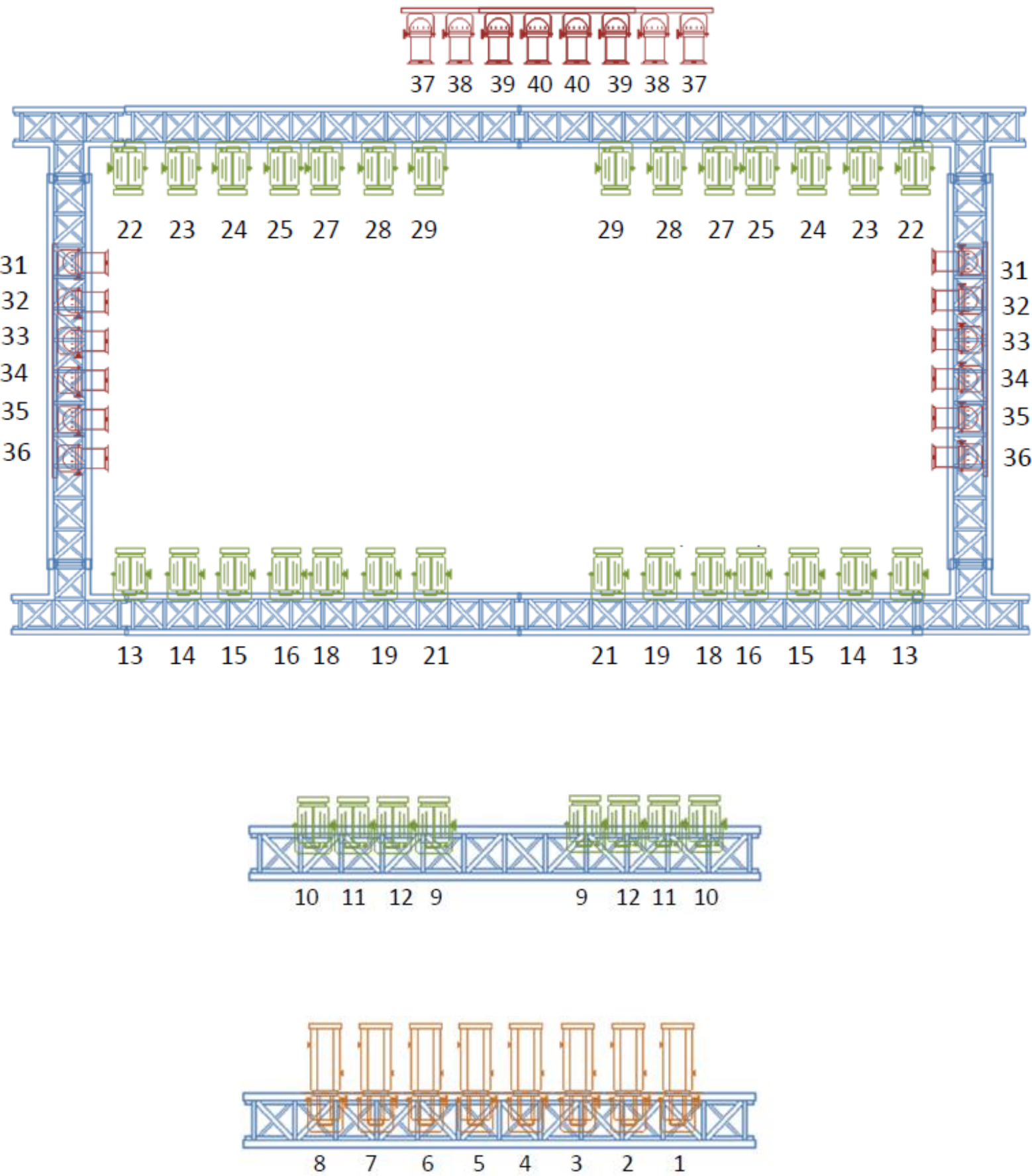
## **Ice**

Venue Able To Provide On Request.





Standard In House Lighting Rig







CORN EXCHANGE

